

building construction design

www.buildingconstructiondesign.co.uk

June/July 2018

- 02 Appointments & News
- 04 Building Products
- 05 Interiors
- 13 Exteriors

Cover image: Neaco
See page 07 for details

Rockpanel A2 facade cladding

Where aesthetics and fire safety meet



Designing out Risk

Because the facade cladding boards are produced from the volcanic rock basalt, they can withstand particularly high temperatures and are classified as limited combustible: European fire class A2-s1, d0.

Rockpanel FS-Xtra facade cladding in combination with ROCKWOOL® non-combustible stonewool insulation offers the ultimate fire-safe solution for the building envelope.

The unique and extensive product range of Rockpanel guarantees no design compromise is needed for your building.

rockpanel.co.uk
rockwool.co.uk



Part of the ROCKWOOL Group



Coventry's Central Six Retail Park covers up with Encasement

Bespoke 'Forma' metal casings from Encasement are helping provide an aesthetic and practical environment for shoppers at Coventry's Central Six Retail Park by concealing structural support columns for a walkway canopy that runs the full length of the shopping area.

Central Six is a small out of town centre, which combines fashion retail, homeware and designer clothing stores with specialist shops, such as Hobbycraft and American Golf, as well as a fast food restaurant in 14 retail units.

As part of a recent refurbishment and facilities upgrade programme, Encasement supplied and installed 72 square column casings from its 'Forma' metal casing range, which were used to conceal the existing circular structural steelwork and provide a more contemporary look to the

retail centre.

Manufactured from durable 3mm thick aluminium and measuring 235mm square, each casing stands 3350mm high and is finished with an RAC 7022 Umber Grey PPC coating to not only complement the retail park's colour scheme, but also provide additional resistance to weathering and accidental scuffing.

Encasement's Managing Director, Martin Taylor, commented: "Our Forma aluminium casings are widely used in the retail sector in both interior and exterior applications as they provide immense design versatility and colour options, as well as being durable and resistant to weathering when used in projects such as Central Six."

01733 266 889 www.encasement.co.uk



**building
construction
design**



@BuildConstDes



REGISTER ONLINE FOR... Digital magazine • Newsletter • Daily digests

www.buildingconstructiondesign.co.uk

DIFFUSED OR DIRECT DAYLIGHT?

THERE'S ONLY ONE WINNER



..... [ZENON DIFFUSED]

[DIRECT LIGHT - OTHERS]

Diffusing **Zenon Pro** and **Zenon Evolution** GRP rooflights make efficient use of available daylight by distributing it more widely and evenly, reducing the need for artificial lighting systems to counter glare and shadowing. The cost of energy required to light a building through artificial lighting can be more than ten times that of the heat lost through the rooflights resulting in higher running costs and higher CO₂ emissions. Choosing high diffusion rooflights can minimise energy demand and deliver significant savings for a business.



ZENON[®]

LOW CARBON GRP DAYLIGHT SOLUTIONS

DISCOVER MORE: WWW.HAMBLESIDE-DANELAW.CO.UK/ZENON-ROOFLIGHTS/
T: 01327 701 920 E: SALES@HAMBLESIDE-DANELAW.CO.UK

Hambleside Danelaw
Building Products





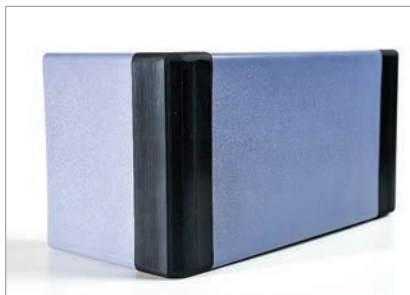
New Heavy Duty Accessories for Yeoman Shield Protection Rails

With over 50 years of experience in the wall & door protection industry, Yeoman Shield continually assesses and develops their products based on not only their own knowledge, but also feedback received from customers.

Always keen to problem solve Yeoman Shield responded to customers who wished to use 200mm, 125mm Protection Rail, or the Guardian Twin Handrail in areas of heavy traffic, where vulnerable corners and wall surfaces were being hit by very heavily laden or motorised vehicles and equipment.

“Whilst our standard PVCu injection moulded accessories are more than capable of warding off general, everyday blows, in certain circumstances where the traffic is exceptionally heavy and continuous an alternative, more durable option is required”

“This led us to designing and manufacturing alternative 200 mm and 125 mm rubber accessories to solve this problem, all of which are compatible with the profiles



mentioned above” commented Yeoman Shield’s Sales Director, Stuart Russell.

Manufactured solely from EPDM rubber, which is a dense and abrasion resistant compound, results in the new accessories being capable of absorbing heavy blows – perfect for use in areas such as service corridors, warehouse, manufacturing facilities, etc. – in fact anywhere that has the traffic of heavily laden trucks and trolleys passing through on a daily basis.



To receive product information, costings or if you would like to request a site survey from an Area Sales Managers, then please contact sallyann@yeomanshield.com

All products are showcased on Yeoman Shield’s newly launched website where you can also sign up to a mailing list to keep up to date with all product development and news.

0113 279 5854 www.yeomanshield.com

Encasement’s simple solution to conceal fire sprinkler system pipework

Where fire sprinkler systems are being installed or retro-fitted in tower blocks and flats, Encasement’s ‘Versa’ pipe boxing range provides the perfect cost effective solution for concealing sprinkler pipework.

Manufactured from pre-formed FSC® certified plywood and pre-finished in a durable white melamine, Versa ‘L’ shaped boxing is available in either 5mm or 8mm thicknesses for use within flats and communal areas, such as stairs and lift lobbies where sprinklers are required.

Versa boxing can be used with standard sprinkler heads or concealed ‘pop-out’ units with cover caps.

Available in a wide range of sizes, Versa sprinkler pipe boxing helps save on installation time, as there’s no need for fabrication or painting on site. All that’s required is for the boxing to be cut to length and holes drilled for the sprinkler heads before securing to the wall or ceiling.

Encasement’s Managing Director, Martin Taylor, commented “Our fire sprinkler boxing has already been installed on a large number of high rise refurbishment projects, where pipework and sprinklers need to be concealed for both aesthetic and practical reasons. Not only are they cost effective and easy to install,



but Encasement also holds a full FSC® ‘Chain of Custody’ certification, which certifies that our products are manufactured from sustainable timbers. This means that local authorities can

meet their compliance obligations under UK government procurement guidance.”

01733 266 889 www.encasement.co.uk

FREE
Site Survey &
Quotation Service
enquiries@kempersystem.co.uk

KEMPEROL® **Liquid Waterproofing**

Long term protection for educational buildings, flat roofs and critical structures

Warm roofs, inverted roofs, green roofs, podium decks, walkways, balconies, terraces, car parks...

- No hot works - No fire risk
- Sustainable and Solvent-free
- Odourless - No disruption

Whatever your requirements, we have a certified and proven solution to meet your needs.

Contact us to discuss your next project.



KEMPER SYSTEM
Tel: 01925 445532
enquiries@kempersystem.co.uk
www.kempersystem.co.uk

 **KEMPER**
SYSTEM
Kemperol Liquid Waterproofing



Grade II becomes Grade A with Neaco



Neaco have supplied an extensive balustrade specification to help transform a Grade II Listed former Post Office and Telephone Exchange into Grade A contemporary offices in Sheffield city centre. SDA Architects designed the comprehensive internal revamp of the property, built in the 1920s, to create

Steel City House comprising 60,000 square feet of prime commercial space across five storeys. Neaco's structural glass balustrade forms part of the £10m project's signature feature: a new central atrium which brings natural light into the heart of the building.

www.neaco.co.uk

All in one shading solution by Sunbell



Sunbell, a leading Italian designer and manufacturer of interstitial blinds for glazing, has launched an innovative new solution for residential and commercial windows and doors. Powered by a 24v low-voltage motor the system features a slim

control switch positioned on the glass that allows for individual movement or alternatively for group activation up to 12 blinds, using a hand held remote device. The 'All in one' system is hard-wired to a central power source with each blind linked together using a simple 'sprung' electrical connector positioned in the frame.

01245 422489 info@sunbell.co.uk

New coating "will take market by storm"



Bradite is set to take the specialist paint market by storm with the launch of a new multi-purpose product that is suitable for use on all surfaces. Bradite One Can, an all-purpose water-based primer and finish in one can, will be available at merchants from this Spring. The unique product is an interior and exterior, anti-corrosive, quick

drying, low odour, low VOC, primer, undercoat and finish. The high-performance coating will give protection to many substrates including: cladding, UPVC, powder coated metal, steel, and timber including fencing, garden furniture and sheds.


01248 600315 www.bradite.com

Offsite solutions launches new solution



Offsite Solutions has launched a new premium bathroom pod which incorporates a concrete base – and becomes the only UK pod manufacturer to offer this type of factory-built wet room. This latest innovation from Offsite Solutions provides a fully waterproofed pod solution for high specification wet rooms and bathrooms. It features cold rolled steel-framed walls with a cast concrete base which removes the need for visible shower trays to create a clean, contemporary appearance.

info@offsitesolutions.com



ARTISAN

PANEL DOOR COLLECTION

MADE TO ORDER BY

ahmarra

ahmarra.co.uk

*Pure Freude
an Wasser*

GROHE
WAVES



PERFECT MATCH

GROHE CERAMICS MADE TO MATCH
IN FORM AND FUNCTION

It isn't easy to find the perfect bathroom. But with GROHE Cube Ceramic it couldn't be simpler. All ceramics are designed and engineered to harmonise perfectly with basin mixers, shower heads and sanitary systems. Also discover GROHE Bau Ceramic and GROHE Euro Ceramic.
ceramics.grohe.com



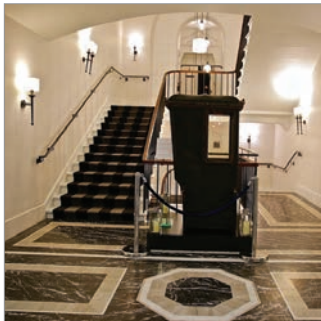
Leading manufacturer of PVC-U & PVC-UE building products
Weatherboard and Shiplap Cladding



Follow us on


www.freefoam.com
01604 591110
marketing@freefoam.com

Marble provides exquisite entrance for award winning five star hotel



The magnificent marble entrance hall at the award winning Gainsborough Bath Spa Hotel has been created by National Federation of Terrazzo, Marble and Mosaic Specialists (NFTMMS) member Zanetti & Company Ltd. Zanetti was commissioned to install 220m² of Calacatta Oro, Grigio Carnico and Nublado natural marble to the entrance hall and corridors areas of this five-star hotel. The Gainsborough Bath Spa is housed in an historic Grade Two Listed Building in the centre of Bath, a world heritage site. The hotel is centred around Spa Village Bath and has privileged access to the natural thermal, mineral-rich waters. "In addition to the entrance hall, we supplied and installed bespoke cut, natural marble benches, plus a stunning mosaic feature in the sauna and steam room areas, said Mr Zanetti. The NFTMMS represents companies which wish to maintain and improve the standards of craftsmanship and technical control on which the industry depends. It includes organisations involved in terrazzo, mosaic, marble, granite, limestone and quartz and NFTMMS members freely offer technical advice and assistance with specifications. Visit the website for more details.

www.nftmms.co.uk

Housebuilder & Developer website



The Housebuilder & Developer (HBD) website is an online provider of past and present products and news items for the housebuilder and developer. hbdonline.co.uk is a one-stop source for all the latest press releases providing any visitor with access to information about products and services that they may require. From the website, you can find links to digital issues that have live

links to advertisers' sites, as well as daily email alerts to keep you as informed as possible.

www.hbdonline.co.uk

Neaco balustrade specified for school



Neaco's powder coated aluminium balustrade has been specified at Elthorne Park High School in Ealing as part of a new multi-purpose learning and activity building designed by Re-format. Fred Gardiner, Architectural Consultant at Re-Format, said: "Neaco are a very professional bunch. They took on this project for us, provided all the information we needed to specify and design the balustrades throughout, produced installation drawings to our requirements based on their own site survey and carried them through to a trouble-free conclusion on site. Their system is very clean, neat and robust."

www.neaco.co.uk



www.hoyles.com
+44 (0)1744 886600



Improve Fire Safety in Student Kitchens

HobWatcher

- Automatic Hob Isolator
- Ensures hobs are not left on unattended
- Prevents hob fires
- Easy to operate
- LED and audible status alerts
- Rapid installation
- Directly replaces existing hob isolator switch

HobWatcher from Hoyles prevents hob fires by ensuring hobs cannot be left on unattended. Mains power to the hob is turned off if no one is present.



DorWatcher

- Keep student kitchen fire doors closed
- Prevent the spread of smoke
- Contain kitchen fires
- Reduce fire alarm activations
- No user training
- Robust and tamper resistant
- Easy to install and maintain
- Battery or mains powered

DorWatcher from Hoyles helps ensure kitchen fire doors are kept closed to prevent the spread of cooking smoke, and in the worst-case scenario, contain a fire.






For the finest traditional handmade bricks, we wear the crown.

BRICK MATCHING • BESPOKE BLENDS • EXPERT ADVICE • FREE SAMPLES

Suitable for **new build, restoration & extension**. Call **01952 750 816** or visit **imperialbricks.co.uk**

Laminates for a sound performance by absorption



Abet Laminati's continuing partnership with Print Acoustics® – a division of Belgian company Triplaco (Family group founded in 1890) – has proven popular in helping combat the ongoing problems of sound reverberation in commercial, public sector, school, restaurant, retail and residential environments. Modern design trends for minimalist interiors coupled with hard surfaces creates issues with sound pollution bouncing around interior spaces affecting ambient noise levels and the associated discomfort for users. Noise can also impact on the success of a space. In education, for example, many studies have shown that noise impacts learning. A Bronzaft and McCarthy study showed that New York City students were hampered in their reading skills by elevated noise levels. There are over 500 Abet colours and woodgrain finishes available for use as wall cladding, for cabinet doors or freestanding units. They are specially designed to embrace the hospitality, retail, commercial, education and residential sectors where noise pollution can be a problem particularly in meeting rooms, music rooms, restaurants, school halls, sports halls and shops.

uk.abetlaminati.com

Bostik provides the right formula for Swansea University chemistry labs



Bostik has been selected by commercial flooring contractor, Artisan Flooring, to provide subfloor preparation products as part of a £60 million refurbishment project at the Singleton Park Campus at Swansea University. New state-of-the-art teaching laboratories are being built as part of a multi-million pound investment. Bostik carried out a site survey across the 1000m² flooring space, which revealed that the area had uneven floor levels. To alleviate the issue of uneven floor levels, Bostik's technical team recommended Screedmaster Deep. The versatility of the Screedmaster Deep levelling compound allows for application between 5mm to 50mm in a single step. It can also withstand foot traffic in as little as 90 minutes, meaning the project's timescales would not be compromised. To improve the flow and curing characteristics of the levelling compound, an even coating of Screedmaster Epoxy Primer was first applied. Epoxy Primer is a two part solvent-free, water dispersible primer that's ideal for use when applying smoothing compounds above 10mm in depth. Screedmaster Deep was then used to even out the floor surface ready for the installation of the floorcoverings.

01785 272625 www.bostik-profloor.co.uk

A Healthy Choice for Entrance Solutions

automatic door systems - that is record!

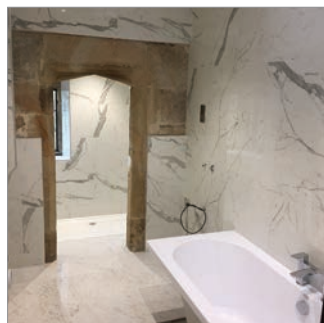
record is the largest supplier, installer and service provider of automated pedestrian doors in the UK, offering door systems for healthcare environments including hermetically sealed sliding doors, where the highest hygiene requirements are essential.

sliding • swing • revolving • curved • folding • telescopic
hygienic • breach control • bomb blast • security interlocking



call: 01922 669341 • email: info@recorduk.co.uk • www.recorduk.co.uk

Stunning tiling at 16th Century “Robin Hood” gatehouse



BAL have worked in partnership with CJ Ceramics (est. 1985) and English Heritage for the stunning renovation of a Grade-1 listed 16th Century gatehouse on the site of “Robin Hood’s” Grave. Located on the historic Kirklees Estate in Calderdale, West Yorkshire, the Gatehouse is a now located on private land and used as a luxury rental residence. According to local legend Kirklees Hall is said to be the final resting place of Robin Hood who was allegedly “murdered” on the site and buried nearby. Craig Sellars from CJ Ceramics was commissioned to tile the interior of the gatehouse in Modena marble-effect porcelain supplied by Yorkshire Tile Company. Because of the historic nature of the building including fragile lime render, Craig called on the expertise of BAL Product Support Manager Lewis Lupton to provide a technical specification for fixing materials. Recently launched, BAL Board is a lightweight tile backer board that is 15-35 per cent lighter than traditional cement-based boards. Because no specialist cutting tools are required and the product produces minimal dust when cut, it is a perfect product for sensitive heritage backgrounds and environments.

01782 591100 www.bal-adhesives.com

Those extra touches from demista and Cosyfloor

Added value at minimal cost to any new or refurbished bathroom must be the inclusion of a **demista™** heated mirror pad. This pad is easy to install, and will ensure a steam free mirror at all times, no matter how steamed up the bathroom. The heated mirror pads are available in a variety of sizes, to suit most mirrors and in the case of a particularly large surface, they can be used in multiples. Running costs are minimal and ideally, once wired in to the lighting system, they will gently warm the mirror when the bathroom is in use. The pads can also be fitted in bathroom cabinets.

The range of underfloor heating products, Cosyfloor™, Ecofloor and Ecomat are designed for specific areas of the home. Both Cosyfloor™ and Ecofloor can be used in every room in the house, including areas where the floor may get wet, bathrooms, shower rooms, kitchens and conservatories. Ecomat can be used in hallways, bedrooms and living areas.

Underfloor heating means no unsightly radiators, adding valuable space to smaller rooms, no hot surfaces for toddlers to touch especially in the nursery or playroom. The added space, especially wall space, enhances the aesthetic appearance of your reception and living areas.

www.demista.co.uk





Blue Roof Launch

Bauder Ltd has launched their roofing solution for construction within flood sensitive, urban areas. The flat roofing specialists used ecobuild 2018, the event for sustainability and innovation in the built environment, to exclusively launch BauderBLUE to industry experts and professionals.

As climate change causes more extreme weather patterns, the construction industry faces new challenges with an increase in excessive rainfall resulting in flash flooding and standing water. Continued



development in built up areas where existing drainage systems can be depleted, and natural infiltration is limited has prompted the introduction of Sustainable Urban Drainage System (SuDS) legislations by local authorities.

To combat these issues, Bauder has originated a Blue Roof System which will simultaneously attenuate heavy rainfall and manage its discharge over a 12-24 hour period. This limits water egress to 5-10 litres per second per hectare, the same flow rates for regional greenfield sites. Each BauderBLUE roofing solution is unique, as calculations for the flow restrictor are specific to each project to ensure that the water run off during storm conditions meets drainage requirements of local planning authorities whilst controlling the time it takes to disperse the water.

The new system was publicly revealed on the Bauder stand on Tuesday 6th March. An introduction to SuDS was given by Malcolm Wearing of CRM Rainwater Drainage before Nigel Blacklock, technical director for Bauder and Peter Rowlinson, product manager for



Bauder, delivered a technical overview and interactive demonstration of the BauderBLUE system. Gary Warpole of NFRC was also on hand to discuss the latest NFRC guidelines on blue roofs.

01473 257671 www.bauder.co.uk

Secured by Design Flatglass Rooflights now available



Roofglaze Rooflights is happy to announce that it has been awarded the Certisecure accreditation and qualified for Secured by Design membership with its Fixed Flatglass Protect+ rooflight range, demonstrating that these are fully compliant with Building Regulations Approved Document Q. At Roofglaze, the company feels that your home's security is something that should be taken seriously and not left to chance. With this in mind, Roofglaze has tried to do its part by engineering a specialist rooflight, utilising a laminated inner glass pane to maximise security. Alongside the added security of the laminated inner pane, its Flatglass Protect+ rooflights will still have the same sleek and contemporary profile that makes the standard Fixed Flatglass rooflights so pleasing on the eye. Roofglaze's Protect+ range of Flatglass rooflights have been extensively attack tested against STS 202 by a leading test house Exova to determine their compliance with Build Regulations Part Q – Security in Dwellings. The stock range of Fixed Flatglass Protect+ rooflights are now available to buy online for delivery to you in three-five working days.

01480 474 797 www.roofglaze.co.uk

Roofglaze Group restructure



Roofglaze Ltd is pleased to announce that it will officially become a group comprising three limited companies, with Roofglaze Holdings steering the aspirations of the group and its two customer-facing subsidiaries; Roofglaze Rooflights and Roofglaze Limited. Roofglaze Ltd has consulted both clients and staff to establish how the business can best service its customers, which has led to the business taking the strategic step to restructure. The group is pleased to announce the appointments of Chris Morgan as Managing Director of Roofglaze Rooflights, and Robert Culley as Managing Director of Roofglaze Limited. By having two specialised and efficient sub-divisions, Roofglaze will be able to further expand on its product and service offering in an increasingly competitive marketplace. Roofglaze Rooflights will offer customers a wide range of stock and bespoke Flatglass Rooflights, Roof Lanterns and Domes. Roofglaze Limited will continue to provide its unique range of bespoke large area skylights through its key partnerships with established glazing system manufacturers, as well as offering its own contemporary Flatglass rooflights and Solis skylight systems.

01480 474 797 www.roofglaze.co.uk

G-Smatt completes one of the world's largest architectural glass LED media facades

G-Smatt Europe's parent company, G-Smatt, has successfully completed the installation of what is believed to be one of the world's largest installations of an architectural LED media glass facade. The innovative glass has been installed on the Coex Convention & Exhibition Centre, in Samseong-dong of Gangnam-gu district in Seoul, South Korea.

The project took three months to install and was completed in December last year. There were a number of challenges facing the team as the building remained open throughout the construction process. So, whilst the G-Smatt media glass could be installed during the day, all the associated welding and painting had to be carried out overnight.

On the technical side the main challenge came in the form of the three different zones, which were of varying dimension. This required some complex engineering to ensure a constant pitch of the LEDs across the glass to ensure the highest quality for the media display. A total of 1,200 sq metres of the media glass has been installed which contains over 400,000 LEDs.

Coex is owned by the Korea International Trade Association, one of the biggest private economic organisation in Korea. Technically it's a private company, but it takes on the



character of a public institution. Therefore, before the glass could be installed the company was required to obtain the same level of approvals as required by government buildings; no easy feat and one which required a great deal of effort from the G-Smatt team. There is also a requirement for 30 per cent of the display time be allocated to public service announcements including PR for the Gangnam-Gu municipal government.

The remaining 70 per cent of the time is dedicated to high-end brand advertisement eg AUDI, Blizzard, Calvin Klein, Cartier and Tiffany.

Company Profile

G-SMATT is a Korean company that produces an innovative digital smart glass product. Launched in 2013 the company now has offices in five countries. The company believes in the transformation of the digital city scape with compelling architectural media and interactivity. Its innovative, building grade, laminated media glass provides full transparency and rich media capability. This allows developers and architects to provide a new way for people to experience and enjoy their buildings and the surrounding urban spaces without compromising on the aesthetic beauty of their original design. In the new world of the Internet of Things it also allows for unparalleled connectivity and integration, a key in the development of the smart city. G-SMATT produces both architectural and exhibition products and received the LCA 2017 Award for Technological Innovation of the Year.

01865 688221 www.g-smatteurope.com





It's a Lift Slide Life for Us

Now it's your turn to lift and slide your product range with Comar 7Pi LS+. Innovative lift and slide gearing provides smooth operation for door configurations up to 12 metres wide and 3 metres high, creating true glazed sliding walls. From one system Comar 7Pi LS+ provides delivered solutions, for the summer months maximise the opening space with the three-track slider which creates two thirds clear opening, whilst in the winter the lowest U-values keep out the cold.

Innovation comes from Comar 7Pi LS+ offering unique solutions from one system, which means that with the same profiles you can provide lift slide or straight rolling gear, standard or slim interlock, enhanced performance with the inclusion of thermal foam and double or triple track configurations.

Optional slim interlocks maximise the homeowners view out when the doors are in the closed position keeping the slim sightlines of Comar 7Pi LS+ doors with the reassurance of the lowest U-values, so even in the coldest winter months daylighting is maximised and

warmth assured. For a standard CEN size set of doors U-values are down to 1.4 with a 1.0 centre pane and using glass technology and Comar's Enhanced Thermal Foam U-values of 0.74 are achievable.

The real advantage of this system is it's smooth and easy lift operation, it's ease of operation for sliding doors means that there is no alternative; it really is a lift slide life for all members of the family. Another advantage is the ability to lock the door in an open position anywhere along the track which means that the homeowner can open the door for ventilation without the risk of small children and toddlers exiting the doors.

For our fabricator and trade partners, Comar Systems utilises multi-function profiles which means that from a minimum stock all configurations of this feature laden system can be fabricated. Installers with the unique Comar Easyfit components minimise time on site and disruption to the home owner whilst maximising returns.

The Comar 7Pi Lift and Slide was developed to ensure a highly engineered solution that offers market leading



performance. Feedback from the UKAS Accredited Test House was "it is the best they'd ever seen", as it passed BS6375 Parts 1, 2 and 3 with no water leakage at 1050Pa. The hardware, has been tested to over 50,000 open and closing cycles.

As Secured by Design is now being incorporated into some region's Planning conditions and BREEAM Assessments, Comar 7Pi LS+ passed the new stringent PAS24:2016 and holds a Kite-mark for Enhanced Security to enable sub-contractors to provide an SBD Licensed product to discerning customers.

Comar 7Pi LS+ now provides a future proof solution with a glazing pocket of up to 57mm.

projects@parksidegroup.co.uk
020 8685 2318 www.comar-alu.co.uk

Healing daylight at Benenden

Kalwall® translucent cladding is the architectural focus of the new £55million development of Benenden Hospital in Cranbrook, Kent.

The scheme, designed by architects C A Vaughan Blundell with assistance from SR Architects Ltd, has created a wonderfully light and airy entrance atrium designed to welcome and create an enhanced patient and visitor experience with maximised natural daylight. The main contractor was Willmott Dixon Construction.

The Kalwall skylights provide additional light in the large atrium projecting it deep into the interior. They were specified complete with highly insulating Nanogel which achieves an impress U value of 0.28W/m²K, helping the project attain a Breeam status of 'Good'.

The skylights have a unique ability to bathe interior spaces with diffused and glare-free daylight, which creates a stimulating and healthy environment. In addition, their heavily insulated composition eliminates glare and hotspots.

Geoff Holden, Senior Technician at C A



Vaughan Blundell comments, "The use of Kalwall represented the best value balance of energy saving and cost and provided us with the ideal way to achieve spatial daylighting within the requirements of Part L".

Kalwall is a popular choice for projects where performance, long life cycle and low maintenance are required, coupled with an aesthetic finish. The lightweight system

reduces the need for supporting structures while offering the highest protection in terms of wind-borne debris and resistance to impact, abrasion and point loads.

Case studies and technical information are available from Structura UK Ltd.

01233 501 504
www.structura-uk.com/kalwall

Hauraton drainage channels used at Maritime Transport Headquarters

The Maritime Transport Limited new £5 million headquarters in Felixstowe has received the accolade of “Winner-Design (Non residential)” at the Suffolk Coastal Quality of Place awards held in October 2015. Designed by Architects, Wincer Kievenaar, the Maritime Headquarters office provides an impressive gateway to Felixstowe Port.

The Headquarters extensive car park, set with composite grey blocks is drained by 98 metres of Hauraton RECYFIX® PLUS 150 channels fitted with Class C250, HEELSAFE ductile iron gratings. A further 47 metres of RECYFIX® PLUS 100 channels were also installed in other locations on site.

The RECYFIX® PLUS channel unit is made of tough, virtually unbreakable recycled polypropylene (PP) formulated to be very resistant to daily temperature fluctuations from frost conditions to strong sunlight, including the Ultra Violet (UV) spectrum. The channel unit also features galvanised steel top



edges which house the ductile iron gratings. Complying with the requirements of EN 1433, the PP is given its UV resistance by adding just sufficient carbon black as a stabiliser so that the structural strength of the

material is unaffected and a consistent appearance is maintained. The PP is also naturally resistant to de-icing salt.

01582 501380 www.hauraton.co.uk

**building
construction
design**



 @BuildConstDes

REGISTER ONLINE FOR...

Digital magazine
Newsletter • Daily digests

www.buildingconstructiondesign.co.uk



The people behind the product

Freefoam are delighted to announce the launch of three new short videos to promote the business online and through social media. Showcasing the faces behind the product, and the production and distribution facilities located in Northampton, all three give a real insight into how PVC building products are made and distributed from start to finish. With social media becoming an essential part of any companies marketing strategy Freefoam are committed to producing high quality, interesting, up to the minute content – and video is the perfect medium to achieve this. The production facility video features Freefoam's 21m high 'mixing' plant, and 3,840m² manufacturing plant illustrating how the virgin powder is mixed and blended to produce the raw material and then skillfully heated and processed on extrusion lines to produce a range of products including fascia, soffit and guttering. This video highlights how products are stored, picked, packaged and despatched to customers throughout the UK.

01604 591110 freefoam.com/professional/about-freefoam



Just one touch tells you all you need to know

Open a Schueco sliding door and the rigidity, effortless action and solid clunk as it closes proclaim one thing: quality. Systems include doors that slide, lift-and-slide and have hidden frames that deliver outstanding panoramic views.

Also available: slender-profiled windows, slimline façades and super-secure entrance doors, all with the highest levels of insulation that can be up to Passive House standard.

For German engineering made in Britain, there's only one name.

www.schueco.co.uk

SCHÜCO

JH Price & Sons achieve classic showcase with Tobermore paving & walling

Laurel Bank is a charming development of distinguished homes nestled in the peace and tranquillity of Moneyreagh village in County Down. Long-standing Northern Ireland housebuilder, JH Price & Sons, designed the 71 homes to the highest specification and having worked with Tobermore on a regular basis over the last two decades, the developer found that Tobermore had the ideal paving and walling products that would create the warm, elegant style desired at Laurel Bank.

Henry Price, Owner at JH Price & Sons, explained more about the project: "Laurel Bank was developed to serve the need for housing in the Moneyreagh area. The location offers the richness of countryside living and the convenience of being just a short drive from the hustle and bustle of Belfast. When it came to sourcing external building products, we wanted to use a combination finish of bricks and blocks to create a unique finish."

JH Price & Sons had traditionally been an advocate of clay bricks but when Henry saw Tobermore's concrete alternatives, this was a game changer as he explained: "I was really impressed with the aesthetics and performance capability of Tobermore's Lansdowne facing



brick and Country Stone Walling and I could see how they would work well together."

Tobermore's Lansdowne facing brick is manufactured with an aged, antique appearance that creates a rich, charming feel. The best iron oxide colour pigments are used to ensure the product colours are strong and rich, and most importantly, that this vibrancy is retained over the years.

Next on the agenda for the external finishes at Laurel Bank was the landscape design, an essential element in creating homes with kerb appeal. Paving was the obvious hard landscap-

ing material for the developer: "I've worked with Tobermore on a number of successful projects over the last 20 years and there have never been any issues. The paving products produced are the best quality in the marketplace. I simply wouldn't go anywhere else for paving.

Penny, a landscape designer at Tobermore, explained the design concept: "With Laurel Bank there was much more freedom and creativity than normally granted with a commercial development due to the trust Henry Price placed in Tobermore. There was a focus on curvature rather than straight lines as the plots on site were not built in straight lines - the use of curved lawns and paving designs helped tie this together."

The four bedroom detached and three bedroom semi-detached homes at Laurel Bank were constructed in a variety of styles. The site is a testament to JH Price & Sons' reputation for attention to detail and superb internal and external finishes and is fantastic showcase for Tobermore paving and walling products.

Keep up to date with Tobermore's latest projects on the new company website.

028 7964 2411 www.tobermore.co.uk

Construction membrane delivers thermal efficiency and insulation cost savings

Protect Membranes, UK producer of roofing and construction membranes, has introduced Protect TF InterFoil, a CE marked, highly reflective insulating breather membrane designed for use within a timber frame wall panel to enhance its overall thermal performance. Ideally suited to offsite and modular construction, Protect TF InterFoil features a low emissivity, vapour permeable reflective surface, using the tried and tested technology of TF200 Thermo, which can be installed either side of the insulation in conjunction with a 20mm air cavity. This means the building developer and fabricator can move from more expensive, rigid high-density boards to fibrous or EPS insulants without increasing panel sizes, thereby achieving material cost savings.

When Protect TF InterFoil is used with Protect TF200 Thermo insulating breather membrane on the external face of the sheathing board and Protect VC Foil Ultra insulating vapour control layer on the warm side of 100mm 0.032 lambda insulation within a typical 140mm deep timber stud section, the overall wall construction can achieve U-values as low as 0.18W/m²K. This meets the more onerous Fabric

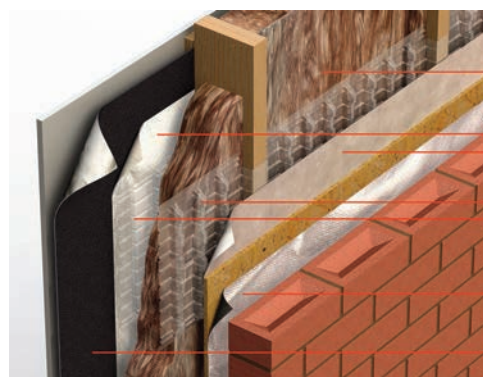
Energy Efficiency requirements detailed in Building Regulations Part L1A.

John Mellor, Product Manager comments, "With the ongoing material supply and price instability of PIR rigid board insulation, using Protect TF InterFoil as part of a timber frame or modular wall system offers opportunities to make meaningful material savings whilst retaining low U-values, without increasing the size of their panels. Our Technical team offers a full U-value calculation service to demonstrate how using Protect TF InterFoil can benefit the overall build."

Available in different roll sizes, including 2.4m and 1.2m widths and 100m lengths, Protect TF InterFoil is installed with the Protect Cavit-E Tray, an insulation spacer designed to create the 20mm low emissivity airspace within the depth of the wall stud on either or both sides of a fibrous insulation.

Alternatively, EPS insulation boards from Jablite (JTWS-TF) have integral ribs on both sides which create the required airspaces.

info@protectmembranes.com
www.protectmembranes.com/tfinterfoil



Protect TF InterFoil with fibrous insulation

Fibrous insulation slabs fitted between studs.

Protect TF InterFoil insulating breather membranes facing into airspaces.

Cavit-E Trays fitted to both sides of the insulation to maintain minimum 20mm airspaces.

Protect TF200 Thermo insulating breather membrane.

Protect VC Foil Ultra insulating AVCL facing into service void.



Windows that make an impact

Cool and cosy. At first glance these current design trends seem contrary to each other. But behind the words the two senses, touch and sight, are currents which move slowly and steadily closer. Convincing window profiles not only to look like wood, but also feel like it too.

RENOLIT developed the three-dimensional

The dynamic deep grain structure displays brushed and sandblasted surface.



VLF emboss to realize desire for greater authenticity. The dynamic deep grain structure displays a brushed and sandblasted surface. The surface finish is linear and uniform, and despite its contoured structure it is also very robust.

VLF has a very natural appearance and is therefore in keeping with current hardwood trends. Since the popularity for oak designs is unwavering, the company presented the new emboss in four different oak designs at the Fensterbau Frontale exhibition in March. The light "Ginger Oak" decor embodies the natural wood concept, whilst the dark "Amaranth Oak" occupies the other end of the colour scale. Somewhere in the middle lies "Honey Oak", a decor that radiates a special warmth, whereas the light grey sheen of the bleached "Weissbach Oak" appears more distant and restrained.

Common to all designs however is their authentic appearance and a subtle silver shimmer that varies with perspective, which sheds a noble kind of light.

When combined with solid colours, VLF is a stylish accompaniment to modern



In conjunction with plain colours, the new VLF emboss is reminiscent of freshly painted solid wood.

architecture and reminiscent of freshly painted solid wood. Six popular plain colours are available with this emboss; White, Cream White, Dark Green, Grey, Anthracite Grey and Black.

01670 718222

marketing.rcl@renolit.com



THE SASH
WINDOW
WORKSHOP

THE FINEST TIMBER WINDOWS AND DOORS

PROVIDING TAILOR MADE SOLUTIONS FOR YOUR PROJECT

- Suitable for Conservation Areas and Listed Buildings
- Supply Only, Supply and Install, Repair and Refurbish



We have worked on various prestigious projects, including: St James' Palace, The Admiralty Buildings, Clandon Park, The Grove Hotel, and Oxford Wildlife Trust.



01344 868 668

www.sashwindow.com



Hauraton high capacity channel system drains extensive car park at Skypark, Exeter

The Skypark Business Park is located just North of Exeter International Airport, Devon and East of the M5 off Junction 29. The Park is a Joint Venture Partnership between St. Moden, the UK's leading regeneration specialist and Devon County Council.

The development, when complete, will cover 130,200 m² (1.4 million ft²) and comprise of office, industrial and manufacturing premises. Ancillary retail development and a hotel are also planned as part of the scheme. Set in landscaped grounds, it includes numerous car parks requiring effective surface water drainage.

In this phased development, three sizes of the Hauraton RECYFIX® MONOTEC high capacity surface drainage system have so far been installed in the extensive asphalt car parks servicing Skypark Units 10 and 20. 145 metres of MONOTEC 100/230 mm, 136 metres of 100/280 and 45 metre of 100/380. 100 mm is the channel



grating width and the internal dimension. The 230 mm (overall height) channel model has a cross-section of 190.5 cm², the 280 mm, 245.5 cm², and the 380 mm, 355.5 cm². The 326 metres of channel supplied provide a total hydraulic capacity of just over 7717 litres.

Hauraton Limited introduced the

MONOTEC system just over two years ago. Skypark joins the numerous installations successfully completed in the United Kingdom.

The MONOTEC one metre long channel component is of a sturdy monolithic design where the HEELSAFE grating and the tongue and groove linking system are integral to the channel moulding. The whole unit is made of tough, virtually unbreakable polypropylene (PP) formulated to be very resistant to daily temperature fluctuations from frost conditions to strong sunlight, including the Ultra Violet (UV) spectrum. PP is naturally resistant to de-icing salt. Complying with the requirements of EN 1433, the PP is given its UV resistance by adding just sufficient stabiliser so that the structural strength of the material is unaffected and a consistent appearance is maintained. The MONOTEC channels have a loading category of up to Class D400.

01582 501380 www.hauraton.co.uk

IT'S NOT JUST A TREE

CONTACT US TODAY TO DISCOVER HOW OUR SOIL CELL TREE PITS ENABLE SuDS SOLUTIONS.

Establishing the future urban landscape

One tree within a 25m³ GreenBlue Urban RootSpace system has **22%** of volume available for stormwater attenuation.

Source: Kenton Rogers - iTree

greenblue.com | 0800 018 7797



Good acoustics for Art and Design



Bedales School is set in an area of outstanding natural beauty on the edge of the South Downs National Park in Hampshire. Its new Art and Design building designed by architects Feilden Clegg Bradley Studios has a strong sense of countryside drawing references from traditional agricultural buildings by creating a series of connected barn forms. Materials were used in their natural state throughout. This includes renewable natural products including sustainably sourced timber for cladding and Trolldtekt's wood wool panels for acoustics, all of which help to reduce the embodied carbon in the construction. The form and east-west orientation of the pitched roofs on the five new buildings defines a series of carefully scaled, north-lit studio spaces. Their dramatic pitched ceilings comprise Trolldtekt acoustic panels on one side to absorb sound and improve acoustics. Specified throughout the UK and Europe, the benefits of 100 per cent Trolldtekt natural wood wool panels include high sound absorption, high durability, natural breathability, low cost life cycle performance and sustainability as documented by Cradle to Cradle certification at silver level.

www.trolldtekt.co.uk

McAvoy uses award-winning technology



Offsite construction specialist, **The McAvoy Group**, has handed over a new school building at West Hill School in Leatherhead, bringing the number of education projects now completed by McAvoy for Surrey County Council to more than 40. McAvoy made extensive use of BIM for the West Hill project to engineer an offsite solution that would accommodate a height difference of 870mm between the main school and the existing modular teaching block. Gradient differences were incorporated within corridors to avoid steps, using a specially-engineered double floor beam design which also maximised offsite construction.

info@mcavoygroup.com

Architects Datafile website



The Architects Datafile (ADF) website is an online provider of past and present products and news items for the architect or specifier. architectsdatafile.co.uk is a one-stop source for all the latest press releases providing any visitor with access to information about products and services that they may require. From the website, you can find links to digital

issues that have live links to advertisers' sites, as well as daily email alerts to keep you as informed as possible.

www.architectsdatafile.co.uk



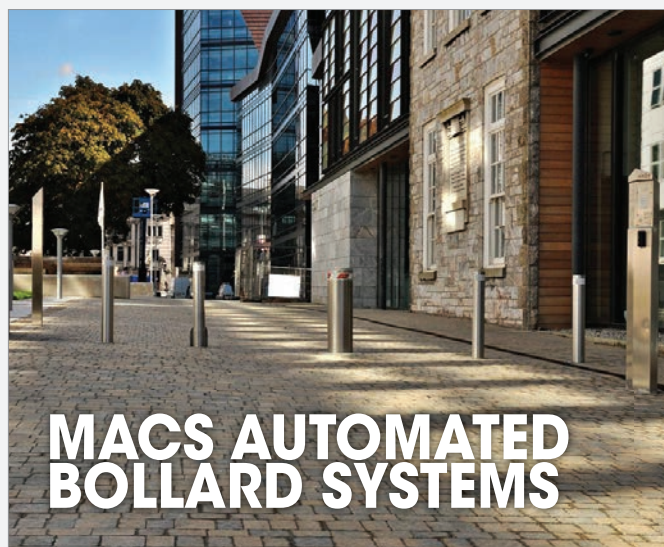
Garador now a recognised Centre of Excellence

Garador has achieved the status of Centre of Excellence from the Builders Merchants Federation (BMF).

Garador is a leading British manufacturer of garage doors, front doors and operators with an ultra modern production facility in Yeovil, Somerset. With over 50 years' experience in the garage door industry, utilising German engineering expertise, it has developed an extensive range of garage doors unsurpassed in the industry.

Garador has now joined an elite group and been named as a Builders Merchant Federation's Regional Centre of Excellence. John Newcomb, Chief Executive Officer of the BMF, said: "Garador offers an excellent facility for our members in the South West to meet and train together." Find out more about Garador's garage doors on the website.

01935 443794 www.garador.com



Macs Automated Bollard Systems Ltd provide the complete solution for the use of automatic security bollards, for all commercial and residential vehicle restriction projects. Whatever your requirements, we are sure to provide a system to suit your needs and aesthetic designs. Our services include:

- Nationwide installation, repair and servicing of bollard systems
- Professional aftercare, and year round callout service
- Optional bollard remote monitoring system
- Affordable ongoing service contracts

For more information on any of our services, please visit www.macs-bollards.com, or to talk to one of our advisors call **0161 3206462**

MACS
AUTOMATED BOLLARD SYSTEMS

